
Product Datasheet

GNG2 Antibody (orb1264926)

Description

GNG2 Antibody

Species/Host

Rabbit

Reactivity

Human, Mouse

Conjugation

Unconjugated

Tested Applications

IHC-P, WB

Immunogen

This GNG2 antibody is generated from a rabbit immunized with a KLH conjugated synthetic peptide between 19-52 amino acids from of human GNG2.

Target

GNG2

Preservatives

Supplied in PBS with 0.09% (W/V) sodium azide.

Form/Appearance

Liquid

Concentration

batch dependent

Storage

Store at 4°C for three months and -20°C, stable for up to one year. As with all antibodies care should be taken to avoid repeated freeze thaw cycles. Antibodies should not be exposed to prolonged high temperatures.

Note

For research use only

Application notes

For IHC-P starting dilution is: 1:25 For WB starting dilution is: 1:8000

Isotype

Rabbit Ig

Clonality

Polyclonal

MW

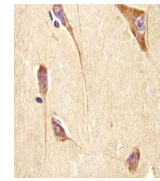
8 kDa

Uniprot ID
[P59768](#)
NCBI
[P59768](#)
Dilution Range

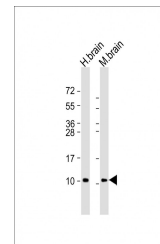
For IHC-P starting dilution is: 1:25 For WB starting dilution is: 1:8000

Expiration Date

12 months from date of receipt.



Antibody staining GNG2 in human brain ti...



Western Blot at 1:8000 dilution Lane 1: ...