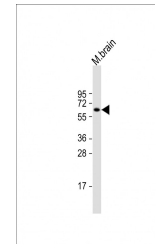


Product Datasheet

ZBTB18 Antibody (orb1264903)

Description	ZBTB18 Antibody
Species/Host	Rabbit
Reactivity	Mouse
Conjugation	Unconjugated
Tested Applications	WB
Immunogen	This ZNF238 antibody is generated from a rabbit immunized with a KLH conjugated synthetic peptide between 318-331 amino acids from human ZNF238.
Target	ZBTB18
Preservatives	Supplied in PBS with 0.09% (W/V) sodium azide.
Form/Appearance	Liquid
Concentration	batch dependent
Storage	Store at 4°C for three months and -20°C, stable for up to one year. As with all antibodies care should be taken to avoid repeated freeze thaw cycles. Antibodies should not be exposed to prolonged high temperatures.
Note	For research use only
Application notes	For WB starting dilution is: 1:2000
Isotype	Rabbit Ig
Clonality	Polyclonal
MW	58 kDa
Uniprot ID	Q99592
NCBI	Q99592
Dilution Range	For WB starting dilution is: 1:2000
Expiration Date	12 months from date of receipt.



Western Blot at 1:2000 dilution + mouse ...