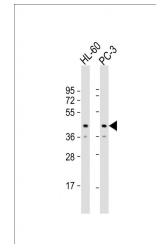


Product Datasheet

MRI1 Antibody (orb1264837)

Description	MRI1 Antibody
Species/Host	Rabbit
Reactivity	Human
Conjugation	Unconjugated
Tested Applications	WB
Immunogen	This MRI1 antibody is generated from a rabbit immunized with a KLH conjugated synthetic peptide between 108-141 amino acids from the Central region of human MRI1.
Target	MRI1
Preservatives	Supplied in PBS with 0.09% (W/V) sodium azide.
Form/Appearance	Liquid
Concentration	batch dependent
Storage	Store at 4°C for three months and -20°C, stable for up to one year. As with all antibodies care should be taken to avoid repeated freeze thaw cycles. Antibodies should not be exposed to prolonged high temperatures.
Note	For research use only
Application notes	For WB starting dilution is: 1:8000
Isotype	Rabbit Ig
Clonality	Polyclonal
MW	39 kDa
Uniprot ID	Q9BV20
NCBI	Q9BV20
Dilution Range	For WB starting dilution is: 1:8000
Expiration Date	12 months from date of receipt.



Western Blot
at 1:8000
dilution Lane
1: ...