

## Product Datasheet

### RPS7 Antibody (orb1264803)

**Description**

RPS7 Antibody

**Species/Host**

Rabbit

**Reactivity**

Human, Mouse, Rat

**Conjugation**

Unconjugated

**Tested Applications**

FC, WB

**Immunogen**

This RPS7 antibody is generated from a rabbit immunized with a KLH conjugated synthetic peptide between 158-191 amino acids from human RPS7.

**Target**

RPS7

**Preservatives**

Supplied in PBS with 0.09% (W/V) sodium azide.

**Form/Appearance**

Liquid

**Concentration**

batch dependent

**Storage**

Store at 4°C for three months and -20°C, stable for up to one year. As with all antibodies care should be taken to avoid repeated freeze thaw cycles. Antibodies should not be exposed to prolonged high temperatures.

**Note**

For research use only

**Application notes**

For FACS starting dilution is: 1:25 For WB starting dilution is: 1:2000

**Isotype**

Rabbit Ig

**Clonality**

Polyclonal

**MW**

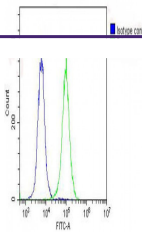
22 kDa

**Uniprot ID**
[P62081](#)
**NCBI**
[P62081](#)
**Dilution Range**

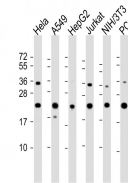
For FACS starting dilution is: 1:25 For WB starting dilution is: 1:2000

**Expiration Date**

12 months from date of receipt.



Overlay histogram showing HeLa cells sta...



Western Blot at 1:2000 dilution Lane 1: ...