

Product Datasheet

ZMPSTE24 Antibody (orb1264718)

Description

ZMPSTE24 Antibody

Species/Host

Rabbit

Reactivity

Human, Mouse

Conjugation

Unconjugated

Tested

IHC-P, WB

Applications
Immunogen

This ZMPSTE24 antibody is generated from rabbits immunized with a KLH conjugated synthetic peptide between 400-430 amino acids from the Central region of human ZMPSTE24.

Target

ZMPSTE24

Preservatives

Supplied in PBS with 0.09% (W/V) sodium azide.

Form/Appearance

Liquid

Concentration

batch dependent

Storage

Store at 4°C for three months and -20°C, stable for up to one year. As with all antibodies care should be taken to avoid repeated freeze thaw cycles. Antibodies should not be exposed to prolonged high temperatures.

Note

For research use only

Application notes

For WB starting dilution is: 1:1000 For IHC-P starting dilution is: 1:50~100

Isotype

Rabbit Ig

Clonality

Polyclonal

MW

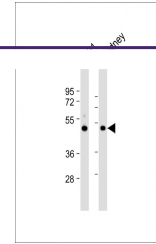
55 kDa

Uniprot ID
[O75844](#)
NCBI
[O75844](#)
Dilution Range

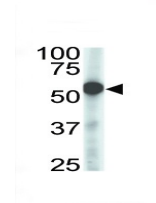
For WB starting dilution is: 1:1000 For IHC-P starting dilution is: 1:50~100

Expiration Date

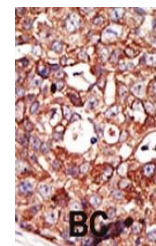
12 months from date of receipt.



Western Blot at 1:1000 dilution Lane 1: ...



Antibody is used in Western blot to dete...



Formalin-fixed and paraffin-embedded hum...