
Product Datasheet

FDPS Antibody (orb1264714)

Description

FDPS Antibody

Species/Host

Rabbit

Reactivity

Human

Conjugation

Unconjugated

Tested Applications

IF, IHC-P, WB

Immunogen

This FDPS antibody is generated from rabbits immunized with a KLH conjugated synthetic peptide between 82-112 amino acids from the N-terminal region of human FDPS.

Target

FDPS

Preservatives

Supplied in PBS with 0.09% (W/V) sodium azide.

Form/Appearance

Liquid

Concentration

batch dependent

Storage

Store at 4°C for three months and -20°C, stable for up to one year. As with all antibodies care should be taken to avoid repeated freeze thaw cycles. Antibodies should not be exposed to prolonged high temperatures.

Note

For research use only

Application notes

For IF starting dilution is: 1:100
For IHC-P starting dilution is: 1:50~100
For WB starting dilution is: 1:1000

Isotype

Rabbit Ig

Clonality

Polyclonal

MW

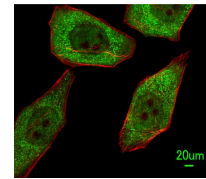
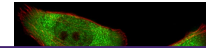
48 kDa

Uniprot ID
[P14324](#)
NCBI
[P14324](#)
Dilution Range

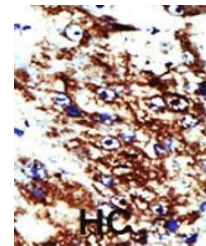
For IF starting dilution is: 1:100
For IHC-P starting dilution is: 1:50~100
For WB starting dilution is: 1:1000

Expiration Date

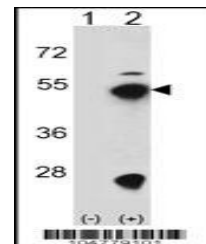
12 months from date of receipt.



Immunofluorescent analysis of A549 cells...



Formalin-fixed and paraffin-embedded hum...



Western blot analysis of FDPS using rabb...