
Product Datasheet

FDPS Antibody (orb1264713)

Description

FDPS Antibody


Species/Host

Rabbit

Reactivity

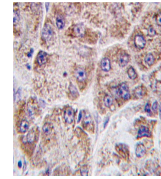
Human

Conjugation

Unconjugated

Tested Applications

IHC-P, WB



Formalin-fixed and paraffin-embedded hum...

Immunogen

This FDPS antibody is generated from rabbits immunized with a KLH conjugated synthetic peptide between 389-419 amino acids from the center region of human FDPS.

Target

FDPS

Preservatives

Supplied in PBS with 0.09% (W/V) sodium azide.

Form/Appearance

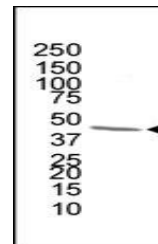
Liquid

Concentration

batch dependent

Storage

Store at 4°C for three months and -20°C, stable for up to one year. As with all antibodies care should be taken to avoid repeated freeze thaw cycles. Antibodies should not be exposed to prolonged high temperatures.



Antibody is used in Western blot to dete...

Note

For research use only

Application notes

For IHC-P starting dilution is: 1:10~50 For WB starting dilution is: 1:1000

Isotype

Rabbit Ig

Clonality

Polyclonal

MW

48 kDa

Uniprot ID
[P14324](#)
NCBI
[P14324](#)
Dilution Range

For IHC-P starting dilution is: 1:10~50 For WB starting dilution is: 1:1000

Expiration Date

12 months from date of receipt.