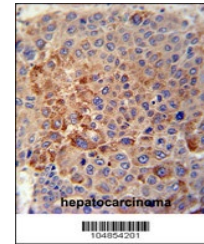
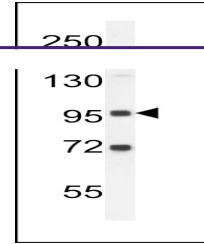

Product Datasheet

GPLD1 Antibody (orb1264708)

Description	GPLD1 Antibody
Species/Host	Rabbit
Reactivity	Human
Conjugation	Unconjugated
Tested Applications	IHC-P, WB
Immunogen	This GPLD1 antibody is generated from rabbits immunized with a KLH conjugated synthetic peptide between 679-709 amino acids from the C-terminal region of human GPLD1.
Target	GPLD1
Preservatives	Supplied in PBS with 0.09% (W/V) sodium azide.
Form/Appearance	Liquid
Concentration	batch dependent
Storage	Store at 4°C for three months and -20°C, stable for up to one year. As with all antibodies care should be taken to avoid repeated freeze thaw cycles. Antibodies should not be exposed to prolonged high temperatures.
Note	For research use only
Application notes	For WB starting dilution is: 1:1000 For IHC-P starting dilution is: 1:50~100
Isotype	Rabbit Ig
Clonality	Polyclonal
MW	92 kDa
Uniprot ID	P80108
NCBI	P80108
Dilution Range	For WB starting dilution is: 1:1000 For IHC-P starting dilution is: 1:50~100
Expiration Date	12 months from date of receipt.



GPLD1 Antibody immunohistochemistry anal...