

---

## Product Datasheet

### MYB Antibody (orb1264704)

**Description**

MYB Antibody

**Species/Host**

Rabbit

**Reactivity**

Mouse

**Conjugation**

Unconjugated

**Tested Applications**

IHC-P, WB

**Immunogen**

This Myb Sumoylation Site antibody is generated from rabbits immunized with a KLH conjugated synthetic peptide between 506-534 amino acids from human Myb Sumoylation Site.

**Target**

MYB

**Preservatives**

Supplied in PBS with 0.09% (W/V) sodium azide.

**Form/Appearance**

Liquid

**Concentration**

batch dependent

**Storage**

Store at 4°C for three months and -20°C, stable for up to one year. As with all antibodies care should be taken to avoid repeated freeze thaw cycles. Antibodies should not be exposed to prolonged high temperatures.

**Note**

For research use only

**Application notes**

For IHC-P starting dilution is: 1:50~100  
For WB starting dilution is: 1:1000

**Isotype**

Rabbit Ig

**Clonality**

Polyclonal

**MW**

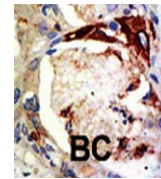
72 kDa

**Uniprot ID**
[P10242](#)
**NCBI**
[P10242](#)
**Dilution Range**

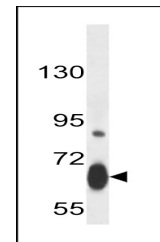
For IHC-P starting dilution is: 1:50~100  
For WB starting dilution is: 1:1000

**Expiration Date**

12 months from date of receipt.



Formalin-fixed and paraffin-embedded hum...



Western blot analysis in mouse heart tis...