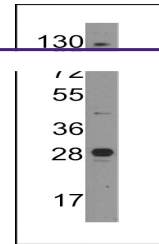
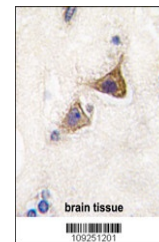

Product Datasheet

Jph3 Antibody (orb1264659)

Description	Jph3 Antibody
Species/Host	Rabbit
Reactivity	Mouse
Conjugation	Unconjugated
Tested Applications	IHC-P, WB
Immunogen	This Junctophilin 3 antibody is generated from rabbits immunized with a KLH conjugated synthetic peptide between 549-578 amino acids from the Central region of human Junctophilin 3.
Target	Jph3
Preservatives	Supplied in PBS with 0.09% (W/V) sodium azide.
Form/Appearance	Liquid
Concentration	batch dependent
Storage	Store at 4°C for three months and -20°C, stable for up to one year. As with all antibodies care should be taken to avoid repeated freeze thaw cycles. Antibodies should not be exposed to prolonged high temperatures.
Note	For research use only
Application notes	For WB starting dilution is: 1:1000For IHC-P starting dilution is: 1:10~50
Isotype	Rabbit Ig
Clonality	Polyclonal
MW	81 kDa
Uniprot ID	Q9ET77
NCBI	Q9ET77
Dilution Range	For WB starting dilution is: 1:1000For IHC-P starting dilution is: 1:10~50
Expiration Date	12 months from date of receipt.



Western blot analysis of anti-Junctophilin...



Formalin-fixed and paraffin-embedded hum...