
Product Datasheet

LECT1 Antibody (orb1264644)

Description

LECT1 Antibody


Species/Host

Rabbit

Reactivity

Human

Conjugation

Unconjugated

Tested Applications

IHC-P, WB

Applications

Formalin-fixed and paraffin-embedded hum...

Immunogen

This LECT1 antibody is generated from rabbits immunized with a KLH conjugated synthetic peptide between 253-281 amino acids from the C-terminal region of human LECT1.

Target

LECT1

Preservatives

Supplied in PBS with 0.09% (W/V) sodium azide.

Form/Appearance

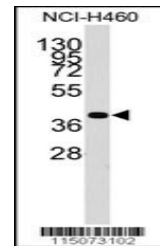
Liquid

Concentration

batch dependent

Storage

Store at 4°C for three months and -20°C, stable for up to one year. As with all antibodies care should be taken to avoid repeated freeze thaw cycles. Antibodies should not be exposed to prolonged high temperatures.



Western blot analysis of anti-LECT1 Anti...

Note

For research use only

Application notes

For IHC-P starting dilution is: 1:10~50 For WB starting dilution is: 1:1000

Isotype

Rabbit Ig

Clonality

Polyclonal

MW

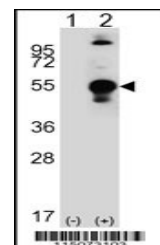
37 kDa

Uniprot ID
[O75829](#)
NCBI
[O75829](#)
Dilution Range

For IHC-P starting dilution is: 1:10~50 For WB starting dilution is: 1:1000

Expiration Date

12 months from date of receipt.



Western blot analysis of LECT1 using rab...