
Product Datasheet

AKR1B1 Antibody (orb1264639)

Description

AKR1B1 Antibody

Species/Host

Rabbit

Reactivity

Human

Conjugation

Unconjugated

Tested Applications

IF, IHC-P, WB

Immunogen

This AKR1B1 antibody is generated from rabbits immunized with a KLH conjugated synthetic peptide between 102-135 amino acids from the Central region of human AKR1B1.

Target

AKR1B1

Preservatives

Supplied in PBS with 0.09% (W/V) sodium azide.

Form/Appearance

Liquid

Concentration

batch dependent

Storage

Store at 4°C for three months and -20°C, stable for up to one year. As with all antibodies care should be taken to avoid repeated freeze thaw cycles. Antibodies should not be exposed to prolonged high temperatures.

Note

For research use only

Application notes

For WB starting dilution is: 1:1000 For IF starting dilution is: 1:10~50 For IHC-P starting dilution is: 1:10~50

Isotype

Rabbit Ig

Clonality

Polyclonal

MW

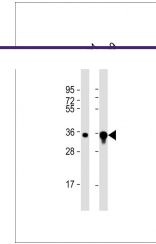
36 kDa

Uniprot ID
[P15121](#)
NCBI
[P15121](#)
Dilution Range

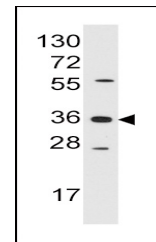
For WB starting dilution is: 1:1000 For IF starting dilution is: 1:10~50 For IHC-P starting dilution is: 1:10~50

Expiration Date

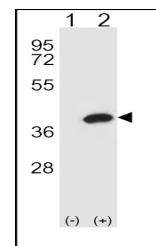
12 months from date of receipt.



Western Blot at 1:8000 dilution Lane 1: ...



Western blot analysis of anti-AKR1B1 Pab...



Western blot analysis of AKR1B1 using ra...