
Product Datasheet

ADCY2 Antibody (orb1264629)

Description

ADCY2 Antibody


 130

Species/Host

Rabbit

55

Reactivity

Human

36

28

Conjugation

Unconjugated

17

Tested

IHC-P, WB

Applications

Western blot analysis of anti-ADCY2 Pab ...

Immunogen

This ADCY2 antibody is generated from rabbits immunized with a KLH conjugated synthetic peptide between 940-969 amino acids from the C-terminal region of human ADCY2.

Target

ADCY2

Preservatives

Supplied in PBS with 0.09% (W/V) sodium azide.

Form/Appearance

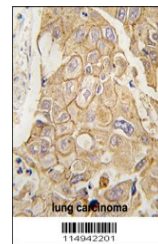
Liquid

Concentration

batch dependent

Storage

Store at 4°C for three months and -20°C, stable for up to one year. As with all antibodies care should be taken to avoid repeated freeze thaw cycles. Antibodies should not be exposed to prolonged high temperatures.



Formalin-fixed and paraffin-embedded hum...

Note

For research use only

Application notes

For WB starting dilution is: 1:1000 For IHC-P starting dilution is: 1:10~50

Isotype

Rabbit Ig

Clonality

Polyclonal

MW

124 kDa

Uniprot ID
[Q08462](#)
NCBI
[Q08462](#)
Dilution Range

For WB starting dilution is: 1:1000 For IHC-P starting dilution is: 1:10~50

Expiration Date

12 months from date of receipt.