
Product Datasheet

MTHFD1 Antibody (orb1264604)

Description

MTHFD1 Antibody

Species/Host

Rabbit

Reactivity

Human

Conjugation

Unconjugated

Tested Applications

IF, IHC-P, WB

Immunogen

This MTHFD1 antibody is generated from rabbits immunized with a KLH conjugated synthetic peptide between 535-562 amino acids from the Central region of human MTHFD1.

Target

MTHFD1

Preservatives

Supplied in PBS with 0.09% (W/V) sodium azide.

Form/Appearance

Liquid

Concentration

batch dependent

Storage

Store at 4°C for three months and -20°C, stable for up to one year. As with all antibodies care should be taken to avoid repeated freeze thaw cycles. Antibodies should not be exposed to prolonged high temperatures.

Note

For research use only

Application notes

For WB starting dilution is: 1:1000
For IF starting dilution is: 1:10~50
For IHC-P starting dilution is: 1:50~100

Isotype

Rabbit Ig

Clonality

Polyclonal

MW

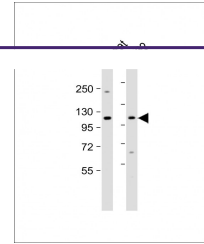
102 kDa

Uniprot ID
[P11586](#)
NCBI
[P11586](#)
Dilution Range

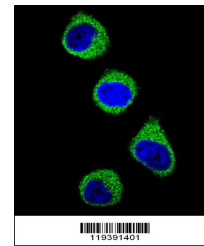
For WB starting dilution is: 1:1000
For IF starting dilution is: 1:10~50
For IHC-P starting dilution is: 1:50~100

Expiration Date

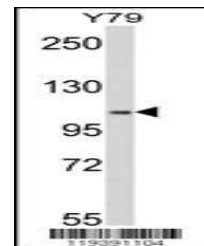
12 months from date of receipt.



Western Blot at 1:1000 dilution
Lane 1: ...



Confocal immunofluorescent analysis of M...



Western blot analysis of M in Y79 cell l...