

---

## Product Datasheet

### RMND5B Antibody (orb1264597)

**Description**

RMND5B Antibody


**Species/Host**

Rabbit

**Reactivity**

Human

**Conjugation**

Unconjugated

**Tested Applications**

IHC-P, WB

**Applications**

Western blot analysis of anti-RMND5B Ant...

**Immunogen**

This RMND5B antibody is generated from rabbits immunized with a KLH conjugated synthetic peptide between 347-375 amino acids from the C-terminal region of human RMND5B.

**Target**

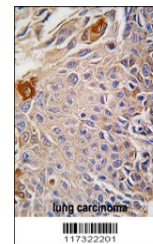
RMND5B

**Preservatives**

Supplied in PBS with 0.09% (W/V) sodium azide.

**Form/Appearance**

Liquid


**Concentration**

batch dependent

**Storage**

Store at 4°C for three months and -20°C, stable for up to one year. As with all antibodies care should be taken to avoid repeated freeze thaw cycles. Antibodies should not be exposed to prolonged high temperatures.

Formalin-fixed and paraffin-embedded hum...

**Note**

For research use only

**Application notes**

For WB starting dilution is: 1:1000 For IHC-P starting dilution is: 1:10~50

**Isotype**

Rabbit Ig

**Clonality**

Polyclonal

**MW**

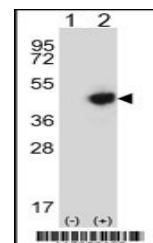
44 kDa

**Uniprot ID**
[Q96G75](https://www.uniprot.org/entry/Q96G75)
**NCBI**
[Q96G75](https://www.ncbi.nlm.nih.gov/nuccore/Q96G75)
**Dilution Range**

For WB starting dilution is: 1:1000 For IHC-P starting dilution is: 1:10~50

**Expiration Date**

12 months from date of receipt.



Western blot analysis of RMND5B using ra...