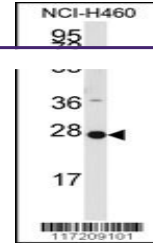
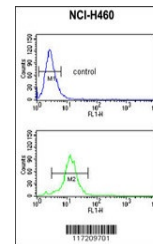

Product Datasheet

PPAP2C Antibody (orb1264596)

Description	PPAP2C Antibody
Species/Host	Rabbit
Reactivity	Human
Conjugation	Unconjugated
Tested Applications	FC, WB
Immunogen	This PPAP2C antibody is generated from rabbits immunized with a KLH conjugated synthetic peptide between 227-254 amino acids from the C-terminal region of human PPAP2C.
Target	PPAP2C
Preservatives	Supplied in PBS with 0.09% (W/V) sodium azide.
Form/Appearance	Liquid
Concentration	batch dependent
Storage	Store at 4°C for three months and -20°C, stable for up to one year. As with all antibodies care should be taken to avoid repeated freeze thaw cycles. Antibodies should not be exposed to prolonged high temperatures.
Note	For research use only
Application notes	For WB starting dilution is: 1:1000 For FACS starting dilution is: 1:10~50
Isotype	Rabbit Ig
Clonality	Polyclonal
MW	33 kDa
Uniprot ID	O43688
NCBI	O43688
Dilution Range	For WB starting dilution is: 1:1000 For FACS starting dilution is: 1:10~50
Expiration Date	12 months from date of receipt.



Western blot analysis of anti-PPAP2C Ant...



Flow cytometric analysis of NCI-H460 cel...