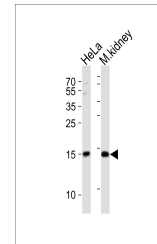


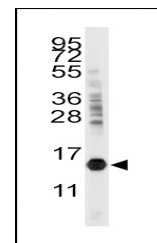
Product Datasheet

CDA Antibody (orb1264544)

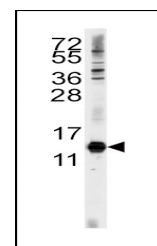
Description	CDA Antibody
Species/Host	Rabbit
Reactivity	Human, Mouse
Conjugation	Unconjugated
Tested Applications	WB
Immunogen	This CDA antibody is generated from rabbits immunized with a KLH conjugated synthetic peptide between 118-146 amino acids from the C-terminal region of human CDA.
Target	CDA
Preservatives	Supplied in PBS with 0.09% (W/V) sodium azide.
Form/Appearance	Liquid
Concentration	batch dependent
Storage	Store at 4°C for three months and -20°C, stable for up to one year. As with all antibodies care should be taken to avoid repeated freeze thaw cycles. Antibodies should not be exposed to prolonged high temperatures.
Note	For research use only
Application notes	For WB starting dilution is: 1:1000
Isotype	Rabbit Ig
Clonality	Polyclonal
MW	16 kDa
Uniprot ID	P32320
NCBI	P32320
Dilution Range	For WB starting dilution is: 1:1000
Expiration Date	12 months from date of receipt.



Western blot analysis of lysates from He...



Western blot analysis of anti-CDA Antibo...



Western blot analysis of anti-CDA Antibo...