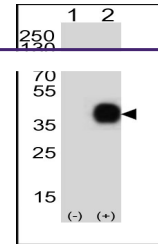
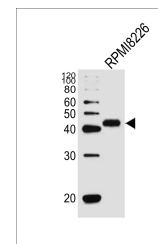

Product Datasheet

CD38 Antibody (orb1264538)

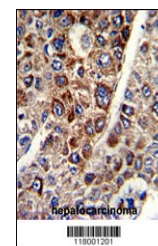
Description	CD38 Antibody
Species/Host	Rabbit
Reactivity	Human
Conjugation	Unconjugated
Tested Applications	FC, IF, IHC-P, WB
Immunogen	This CD38 antibody is generated from rabbits immunized with a KLH conjugated synthetic peptide between 241-270 amino acids from the C-terminal region of human CD38.
Target	CD38
Preservatives	Supplied in PBS with 0.09% (W/V) sodium azide.
Form/Appearance	Liquid
Concentration	batch dependent
Storage	Store at 4°C for three months and -20°C, stable for up to one year. As with all antibodies care should be taken to avoid repeated freeze thaw cycles. Antibodies should not be exposed to prolonged high temperatures.
Note	For research use only
Application notes	For WB starting dilution is: 1:1000For IHC-P starting dilution is: 1:50~100For IF starting dilution is: 1:10~50For FACS starting dilution is: 1:10~50
Isotype	Rabbit Ig
Clonality	Polyclonal
MW	34 kDa
Uniprot ID	P28907
NCBI	P28907
Dilution Range	For WB starting dilution is: 1:1000For IHC-P starting dilution is: 1:50~100For IF starting dilution is: 1:10~50For FACS starting dilution is: 1:10~50
Expiration Date	12 months from date of receipt.



Western blot analysis of lysate from 293...



Western blot analysis of lysate from RPMI...



Formalin-fixed and paraffin-embedded hum...