
Product Datasheet

DDAH1 Antibody (orb1264521)

Description

DDAH1 Antibody


Species/Host

Rabbit

Reactivity

Human, Mouse

Conjugation

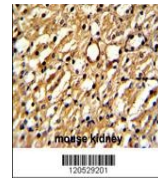
Unconjugated

Tested Applications

FC, IF, IHC-P, WB

Immunogen

This DDAH1 antibody is generated from rabbits immunized with a KLH conjugated synthetic peptide between 221-250 amino acids from the C-terminal region of human DDAH1.



Formalin-fixed and paraffin-embedded mou...

Target

DDAH1

Preservatives

Supplied in PBS with 0.09% (W/V) sodium azide.

Form/Appearance

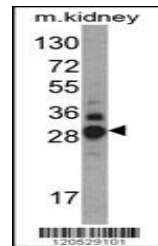
Liquid

Concentration

batch dependent

Storage

Store at 4°C for three months and -20°C, stable for up to one year. As with all antibodies care should be taken to avoid repeated freeze thaw cycles. Antibodies should not be exposed to prolonged high temperatures.



Western blot analysis of DDAH1 Antibody ...

Note

For research use only

Application notes

For IHC-P starting dilution is: 1:50~100
For WB starting dilution is: 1:1000
For FACS starting dilution is: 1:10~50
For IF starting dilution is: 1:10~50

Isotype

Rabbit Ig

Clonality

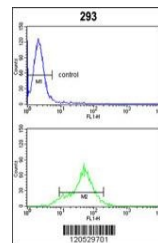
Polyclonal

MW

31 kDa

Uniprot ID
[O94760](#)
NCBI
[O94760](#)
Dilution Range

For IHC-P starting dilution is: 1:50~100
For WB starting dilution is: 1:1000
For FACS starting dilution is: 1:10~50
For IF starting dilution is: 1:10~50



Flow cytometric analysis of 293 cells (b...

Expiration Date

12 months from date of receipt.