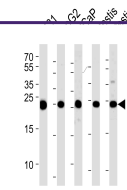


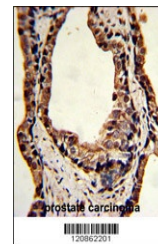
Product Datasheet

TPI1 Antibody (orb1264513)

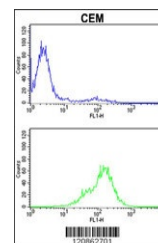
Description	TPI1 Antibody
Species/Host	Rabbit
Reactivity	Human, Mouse
Conjugation	Unconjugated
Tested Applications	FC, IHC-P, WB
Immunogen	This TPI1 antibody is generated from rabbits immunized with a KLH conjugated synthetic peptide between 258-286 amino acids from the C-terminal region of human TPI1.
Target	TPI1
Preservatives	Supplied in PBS with 0.09% (W/V) sodium azide.
Form/Appearance	Liquid
Concentration	batch dependent
Storage	Store at 4°C for three months and -20°C, stable for up to one year. As with all antibodies care should be taken to avoid repeated freeze thaw cycles. Antibodies should not be exposed to prolonged high temperatures.
Note	For research use only
Application notes	For WB starting dilution is: 1:1000 For IHC-P starting dilution is: 1:50~100 For FACS starting dilution is: 1:10~50
Isotype	Rabbit Ig
Clonality	Polyclonal
MW	31 kDa
Uniprot ID	P60174
NCBI	P60174
Dilution Range	For WB starting dilution is: 1:1000 For IHC-P starting dilution is: 1:50~100 For FACS starting dilution is: 1:10~50
Expiration Date	12 months from date of receipt.



Western blot analysis of lysates from A4...



Formalin-fixed and paraffin-embedded hum...



Flow cytometric analysis of CEM cells (b...