
Product Datasheet

PRDX1 Antibody (orb1264507)

Description

PRDX1 Antibody

Species/Host

Rabbit

Reactivity

Human

Conjugation

Unconjugated

Tested Applications

FC, IHC-P, WB

Immunogen

This PRDX1 antibody is generated from rabbits immunized with a KLH conjugated synthetic peptide between 88-116 amino acids from the Central region of human PRDX1.

Target

PRDX1

Preservatives

Supplied in PBS with 0.09% (W/V) sodium azide.

Form/Appearance

Liquid

Concentration

batch dependent

Storage

Store at 4°C for three months and -20°C, stable for up to one year. As with all antibodies care should be taken to avoid repeated freeze thaw cycles. Antibodies should not be exposed to prolonged high temperatures.

Note

For research use only

Application notes

For WB starting dilution is: 1:1000
For FACS starting dilution is: 1:10~50
For IHC-P starting dilution is: 1:50~100

Isotype

Rabbit Ig

Clonality

Polyclonal

MW

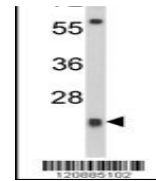
22 kDa

Uniprot ID
[Q06830](https://www.uniprot.org/entry/Q06830)
NCBI
[Q06830](https://www.ncbi.nlm.nih.gov/nuccore/Q06830)
Dilution Range

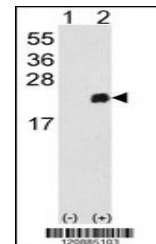
For WB starting dilution is: 1:1000
For FACS starting dilution is: 1:10~50
For IHC-P starting dilution is: 1:50~100

Expiration Date

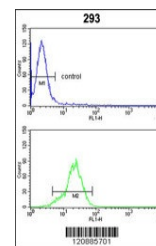
12 months from date of receipt.

Western blot analysis of PRDX1 Antibody ...



Western blot analysis of PRDX1 using rab...



Flow cytometric analysis of 293 cells (b...