

---

## Product Datasheet

### PHGDH Antibody (orb1264496)

**Description**

PHGDH Antibody

**Species/Host**

Rabbit

**Reactivity**

Human, Mouse

**Conjugation**

Unconjugated

**Tested Applications**

FC, IHC-P, WB

**Immunogen**

This PHGDH antibody is generated from rabbits immunized with a KLH conjugated synthetic peptide between 140-168 amino acids from the N-terminal region of human PHGDH.

**Target**

PHGDH

**Preservatives**

Supplied in PBS with 0.09% (W/V) sodium azide.

**Form/Appearance**

Liquid

**Concentration**

batch dependent

**Storage**

Store at 4°C for three months and -20°C, stable for up to one year. As with all antibodies care should be taken to avoid repeated freeze thaw cycles. Antibodies should not be exposed to prolonged high temperatures.

**Note**

For research use only

**Application notes**

For WB starting dilution is: 1:1000  
For IHC-P starting dilution is: 1:50~100  
For FACS starting dilution is: 1:10~50

**Isotype**

Rabbit Ig

**Clonality**

Polyclonal

**MW**

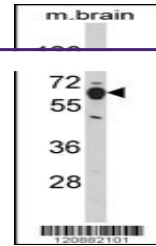
57 kDa

**Uniprot ID**
[O43175](#)
**NCBI**
[O43175](#)
**Dilution Range**

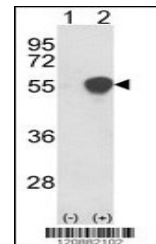
For WB starting dilution is: 1:1000  
For IHC-P starting dilution is: 1:50~100  
For FACS starting dilution is: 1:10~50

**Expiration Date**

12 months from date of receipt.



Western blot analysis of PHGDH Antibody ...



Western blot analysis of PHGDH using rab...



Formalin-fixed and paraffin-embedded hum...