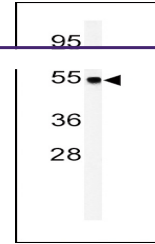
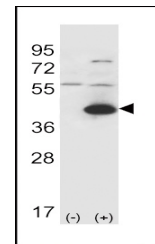

Product Datasheet

GOT1 Antibody (orb1264491)

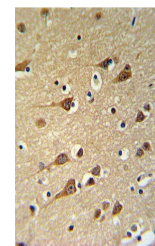
Description	GOT1 Antibody
Species/Host	Rabbit
Reactivity	Human, Mouse
Conjugation	Unconjugated
Tested Applications	FC, IHC-P, WB
Immunogen	This GOT1 antibody is generated from rabbits immunized with a KLH conjugated synthetic peptide between 352-381 amino acids from the C-terminal region of human GOT1.
Target	GOT1
Preservatives	Supplied in PBS with 0.09% (W/V) sodium azide.
Form/Appearance	Liquid
Concentration	batch dependent
Storage	Store at 4°C for three months and -20°C, stable for up to one year. As with all antibodies care should be taken to avoid repeated freeze thaw cycles. Antibodies should not be exposed to prolonged high temperatures.
Note	For research use only
Application notes	For WB starting dilution is: 1:1000For IHC-P starting dilution is: 1:10~50For FACS starting dilution is: 1:10~50
Isotype	Rabbit Ig
Clonality	Polyclonal
MW	46 kDa
Uniprot ID	P17174
NCBI	P17174
Dilution Range	For WB starting dilution is: 1:1000For IHC-P starting dilution is: 1:10~50For FACS starting dilution is: 1:10~50
Expiration Date	12 months from date of receipt.



Western blot analysis of GOT1 Antibody i...



Western blot analysis of GOT1 using rabb...



GOT1 Antibody IHC analysis in formalin f...