

---

## Product Datasheet

### ATP5B Antibody (orb1264483)

**Description**

ATP5B Antibody

**Species/Host**

Rabbit

**Reactivity**

Human

**Conjugation**

Unconjugated

**Tested Applications**

FC, IF, IHC-P, WB

**Immunogen**

This ATP5B antibody is generated from rabbits immunized with a KLH conjugated synthetic peptide between 135-163 amino acids from the Central region of human ATP5B.

**Target**

ATP5B

**Preservatives**

Supplied in PBS with 0.09% (W/V) sodium azide.

**Form/Appearance**

Liquid

**Concentration**

batch dependent

**Storage**

Store at 4°C for three months and -20°C, stable for up to one year. As with all antibodies care should be taken to avoid repeated freeze thaw cycles. Antibodies should not be exposed to prolonged high temperatures.

**Note**

For research use only

**Application notes**

For IHC-P starting dilution is: 1:25  
For IF starting dilution is: 1:25  
For WB starting dilution is: 1:1000  
For FACS starting dilution is: 1:10~50

**Isotype**

Rabbit Ig

**Clonality**

Polyclonal

**MW**

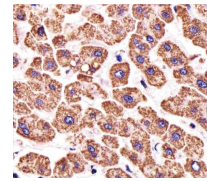
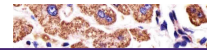
57 kDa

**Uniprot ID**
[P06576](#)
**NCBI**
[P06576](#)
**Dilution Range**

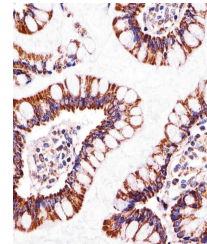
For IHC-P starting dilution is: 1:25  
For IF starting dilution is: 1:25  
For WB starting dilution is: 1:1000  
For FACS starting dilution is: 1:10~50

**Expiration Date**

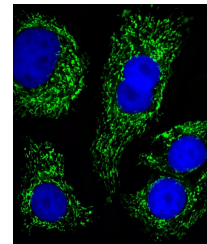
12 months from date of receipt.



Immunohistochemical analysis of paraffin...



Immunohistochemical analysis of paraffin...



Fluorescent image of SK-BR-3 cells stain...