
Product Datasheet

CRIP1 Antibody (orb1264476)

Description

CRIP1 Antibody

Species/Host

Rabbit

Reactivity

Human

Conjugation

Unconjugated

Tested Applications

FC, IHC-P, WB

Immunogen

This CRIP1 antibody is generated from rabbits immunized with a KLH conjugated synthetic peptide between 48-77 amino acids from the C-terminal region of human CRIP1.

Target

CRIP1

Preservatives

Supplied in PBS with 0.09% (W/V) sodium azide.

Form/Appearance

Liquid

Concentration

batch dependent

Storage

Store at 4°C for three months and -20°C, stable for up to one year. As with all antibodies care should be taken to avoid repeated freeze thaw cycles. Antibodies should not be exposed to prolonged high temperatures.

Note

For research use only

Application notes

For WB starting dilution is: 1:8000
For IHC-P starting dilution is: 1:50~100
For FACS starting dilution is: 1:10~50

Isotype

Rabbit Ig

Clonality

Polyclonal

MW

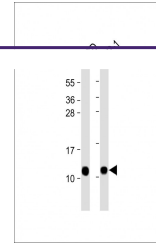
9 kDa

Uniprot ID
[P50238](#)
NCBI
[P50238](#)
Dilution Range

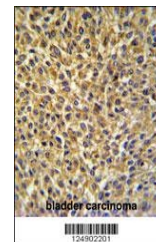
For WB starting dilution is: 1:8000
For IHC-P starting dilution is: 1:50~100
For FACS starting dilution is: 1:10~50

Expiration Date

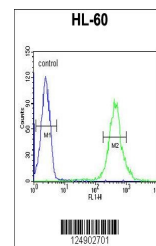
12 months from date of receipt.



Western Blot at 1:8000 dilution Lane 1: ...



CRIP1 Antibody IHC analysis in formalin ...



Flow cytometric analysis of HL-60 cells ...