
Product Datasheet

EREG Antibody (orb1264441)

Description

EREG Antibody

Species/Host

Rabbit

Reactivity

Human

Conjugation

Unconjugated

Tested

FC, IHC-P, WB

Applications
Immunogen

This EREG antibody is generated from rabbits immunized with a KLH conjugated synthetic peptide between 137-165 amino acids from the C-terminal region of human EREG.

Target

EREG

Preservatives

Supplied in PBS with 0.09% (W/V) sodium azide.

Form/Appearance

Liquid

Concentration

batch dependent

Storage

Store at 4°C for three months and -20°C, stable for up to one year. As with all antibodies care should be taken to avoid repeated freeze thaw cycles. Antibodies should not be exposed to prolonged high temperatures.

Note

For research use only

Application notes

For FACS starting dilution is: 1:25
For IHC-P starting dilution is: 1:25
For WB starting dilution is: 1:1000

Isotype

Rabbit Ig

Clonality

Polyclonal

MW

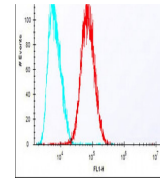
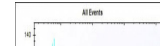
19 kDa

Uniprot ID
[O14944](#)
NCBI
[O14944](#)
Dilution Range

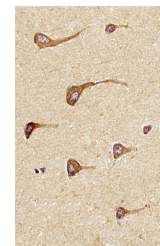
For FACS starting dilution is: 1:25
For IHC-P starting dilution is: 1:25
For WB starting dilution is: 1:1000

Expiration Date

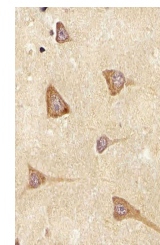
12 months from date of receipt.



Overlay histogram showing HepG2 cells stained with EREG antibody.



Antibody staining EREG in Human brain tissue.



Antibody staining EREG in Human brain tissue.