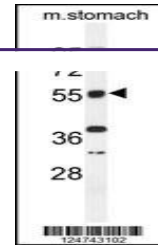
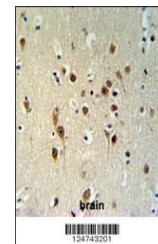

Product Datasheet

TOX3 Antibody (orb1264434)

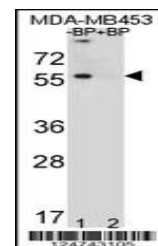
Description	TOX3 Antibody
Species/Host	Rabbit
Reactivity	Human, Mouse
Conjugation	Unconjugated
Tested Applications	FC, IHC-P, WB
Immunogen	This TOX3 antibody is generated from rabbits immunized with a KLH conjugated synthetic peptide between 214-242 amino acids from the Central region of human TOX3.
Target	TOX3
Preservatives	Supplied in PBS with 0.09% (W/V) sodium azide.
Form/Appearance	Liquid
Concentration	batch dependent
Storage	Store at 4°C for three months and -20°C, stable for up to one year. As with all antibodies care should be taken to avoid repeated freeze thaw cycles. Antibodies should not be exposed to prolonged high temperatures.
Note	For research use only
Application notes	For WB starting dilution is: 1:1000For IHC-P starting dilution is: 1:50~100For FACS starting dilution is: 1:10~50
Isotype	Rabbit Ig
Clonality	Polyclonal
MW	63 kDa
Uniprot ID	O15405
NCBI	O15405
Dilution Range	For WB starting dilution is: 1:1000For IHC-P starting dilution is: 1:50~100For FACS starting dilution is: 1:10~50
Expiration Date	12 months from date of receipt.



Western blot analysis of TOX3 Antibody i...



TOX3 Antibody IHC analysis in formalin f...



Western blot analysis of TOX3 Antibody P...