
Product Datasheet

ITPA Antibody (orb1264386)

Description

ITPA Antibody

Species/Host

Rabbit

Reactivity

Human

Conjugation

Unconjugated

Tested Applications

FC, IF, IHC-P, WB

Immunogen

This ITPA antibody is generated from rabbits immunized with a KLH conjugated synthetic peptide between 24-51 amino acids from the N-terminal region of human ITPA.

Target

ITPA

Preservatives

Supplied in PBS with 0.09% (W/V) sodium azide.

Form/Appearance

Liquid

Concentration

batch dependent

Storage

Store at 4°C for three months and -20°C, stable for up to one year. As with all antibodies care should be taken to avoid repeated freeze thaw cycles. Antibodies should not be exposed to prolonged high temperatures.

Note

For research use only

Application notes

For WB starting dilution is: 1:1000
For IF starting dilution is: 1:25
For IHC-P starting dilution is: 1:50~100
For FACS starting dilution is: 1:10~50

Isotype

Rabbit Ig

Clonality

Polyclonal

MW

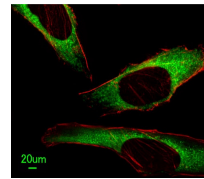
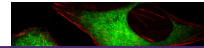
21 kDa

Uniprot ID
[Q9BY32](#)
NCBI
[Q9BY32](#)
Dilution Range

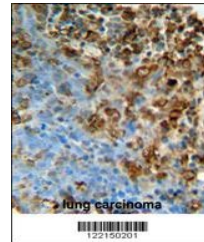
For WB starting dilution is: 1:1000
For IF starting dilution is: 1:25
For IHC-P starting dilution is: 1:50~100
For FACS starting dilution is: 1:10~50

Expiration Date

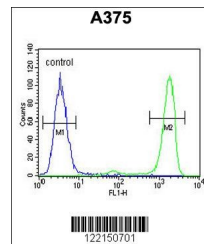
12 months from date of receipt.



Immunofluorescent analysis of Hela cells...



ITPA Antibody immunohistochemistry analysis...



Flow cytometric analysis of A375 cells (...