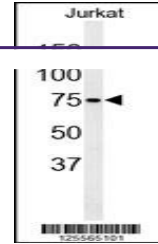
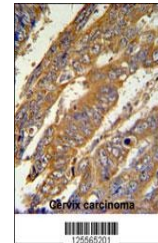

Product Datasheet

PAN3 Antibody (orb1264379)

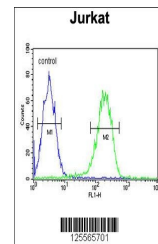
Description	PAN3 Antibody
Species/Host	Rabbit
Reactivity	Human
Conjugation	Unconjugated
Tested Applications	FC, IHC-P, WB
Immunogen	This PAN3 antibody is generated from rabbits immunized with a KLH conjugated synthetic peptide between 771-799 amino acids from the C-terminal region of human PAN3.
Target	PAN3
Preservatives	Supplied in PBS with 0.09% (W/V) sodium azide.
Form/Appearance	Liquid
Concentration	batch dependent
Storage	Store at 4°C for three months and -20°C, stable for up to one year. As with all antibodies care should be taken to avoid repeated freeze thaw cycles. Antibodies should not be exposed to prolonged high temperatures.
Note	For research use only
Application notes	For WB starting dilution is: 1:1000For IHC-P starting dilution is: 1:50~100For FACS starting dilution is: 1:10~50
Isotype	Rabbit Ig
Clonality	Polyclonal
MW	96 kDa
Uniprot ID	Q58A45
NCBI	Q58A45
Dilution Range	For WB starting dilution is: 1:1000For IHC-P starting dilution is: 1:50~100For FACS starting dilution is: 1:10~50
Expiration Date	12 months from date of receipt.



Western blot analysis of PAN3 Antibody i...



PAN3 Antibody IHC analysis in formalin f...



Flow cytometric analysis of Jurkat cells...