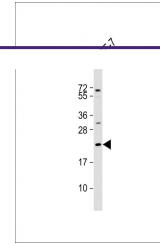
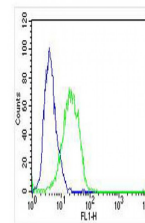

Product Datasheet

ADM Antibody (orb1264358)

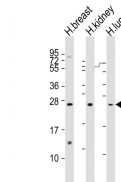
Description	ADM Antibody
Species/Host	Rabbit
Reactivity	Human
Conjugation	Unconjugated
Tested Applications	FC, WB
Immunogen	This ADM antibody is generated from rabbits immunized with a KLH conjugated synthetic peptide between 69-96 amino acids from the Central region of human ADM.
Target	ADM
Preservatives	Supplied in PBS with 0.09% (W/V) sodium azide.
Form/Appearance	Liquid
Concentration	batch dependent
Storage	Store at 4°C for three months and -20°C, stable for up to one year. As with all antibodies care should be taken to avoid repeated freeze thaw cycles. Antibodies should not be exposed to prolonged high temperatures.
Note	For research use only
Application notes	For WB starting dilution is: 1:2000For FACS starting dilution is: 1:25
Isotype	Rabbit Ig
Clonality	Polyclonal
MW	20 kDa
Uniprot ID	P35318
NCBI	P35318
Dilution Range	For WB starting dilution is: 1:2000For FACS starting dilution is: 1:25
Expiration Date	12 months from date of receipt.



Western Blot at 1:2000 dilution + MCF-7 ...



Overlay histogram showing A549 cells sta...



Western Blot at 1:1000-1:2000 dilution L...