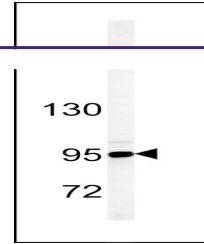
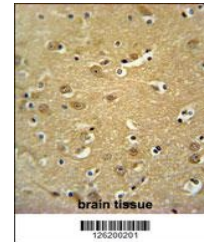

Product Datasheet

KDM7A Antibody (orb1264314)

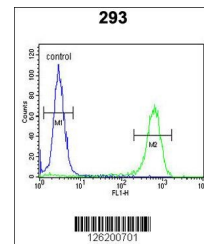
Description	KDM7A Antibody
Species/Host	Rabbit
Reactivity	Human
Conjugation	Unconjugated
Tested Applications	FC, IHC-P, WB
Immunogen	This JHDM1D antibody is generated from rabbits immunized with a KLH conjugated synthetic peptide between 290-316 amino acids from the Central region of human JHDM1D.
Target	KDM7A
Preservatives	Supplied in PBS with 0.09% (W/V) sodium azide.
Form/Appearance	Liquid
Concentration	batch dependent
Storage	Store at 4°C for three months and -20°C, stable for up to one year. As with all antibodies care should be taken to avoid repeated freeze thaw cycles. Antibodies should not be exposed to prolonged high temperatures.
Note	For research use only
Application notes	For WB starting dilution is: 1:1000For IHC-P starting dilution is: 1:50~100For FACS starting dilution is: 1:10~50
Isotype	Rabbit Ig
Clonality	Polyclonal
MW	107 kDa
Uniprot ID	Q6ZMT4
NCBI	Q6ZMT4
Dilution Range	For WB starting dilution is: 1:1000For IHC-P starting dilution is: 1:50~100For FACS starting dilution is: 1:10~50
Expiration Date	12 months from date of receipt.



Western blot analysis of JHDM1D Antibody...



JHDM1D Antibody immunohistochemistry ana...



Flow cytometric analysis of 293 cells (r...