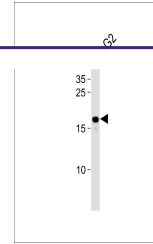
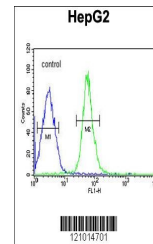

Product Datasheet

HMGA2 Antibody (orb1264212)

Description	HMGA2 Antibody
Species/Host	Rabbit
Reactivity	Human
Conjugation	Unconjugated
Tested Applications	FC, WB
Immunogen	This HMGA2 antibody is generated from rabbits immunized with a KLH conjugated synthetic peptide between 64-92 amino acids from the C-terminal region of human HMGA2.
Target	HMGA2
Preservatives	Supplied in PBS with 0.09% (W/V) sodium azide.
Form/Appearance	Liquid
Concentration	batch dependent
Storage	Store at 4°C for three months and -20°C, stable for up to one year. As with all antibodies care should be taken to avoid repeated freeze thaw cycles. Antibodies should not be exposed to prolonged high temperatures.
Note	For research use only
Application notes	For WB starting dilution is: 1:1000 For FACS starting dilution is: 1:10~50
Isotype	Rabbit Ig
Clonality	Polyclonal
MW	12 kDa
Uniprot ID	P52926
NCBI	P52926
Dilution Range	For WB starting dilution is: 1:1000 For FACS starting dilution is: 1:10~50
Expiration Date	12 months from date of receipt.



Western blot analysis in HepG2 cell line...



Flow cytometric analysis of HepG2 cells ...