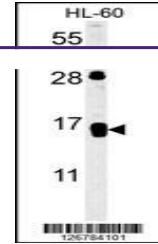
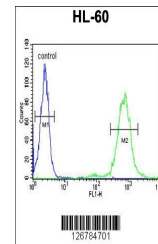

Product Datasheet

CD69 Antibody (orb1264194)

Description	CD69 Antibody
Species/Host	Rabbit
Reactivity	Human
Conjugation	Unconjugated
Tested Applications	FC, WB
Immunogen	This CD69 antibody is generated from rabbits immunized with a KLH conjugated synthetic peptide between 119-148 amino acids from the Central region of human CD69.
Target	CD69
Preservatives	Supplied in PBS with 0.09% (W/V) sodium azide.
Form/Appearance	Liquid
Concentration	batch dependent
Storage	Store at 4°C for three months and -20°C, stable for up to one year. As with all antibodies care should be taken to avoid repeated freeze thaw cycles. Antibodies should not be exposed to prolonged high temperatures.
Note	For research use only
Application notes	For WB starting dilution is: 1:1000For FACS starting dilution is: 1:10~50
Isotype	Rabbit Ig
Clonality	Polyclonal
MW	23 kDa
Uniprot ID	Q07108
NCBI	Q07108
Dilution Range	For WB starting dilution is: 1:1000For FACS starting dilution is: 1:10~50
Expiration Date	12 months from date of receipt.



Western blot analysis in HL-60 cell line...



Flow cytometric analysis of HL-60 cells ...