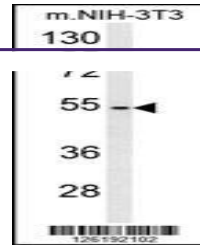
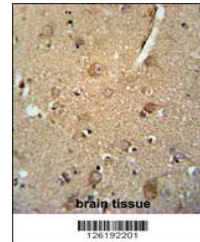

Product Datasheet

CCZ1 Antibody (orb1264176)

Description	CCZ1 Antibody
Species/Host	Rabbit
Reactivity	Human, Mouse
Conjugation	Unconjugated
Tested Applications	IHC-P, WB
Immunogen	This C7orf28A antibody is generated from rabbits immunized with a KLH conjugated synthetic peptide between 239-265 amino acids from the Central region of human C7orf28A.
Target	CCZ1
Preservatives	Supplied in PBS with 0.09% (W/V) sodium azide.
Form/Appearance	Liquid
Concentration	batch dependent
Storage	Store at 4°C for three months and -20°C, stable for up to one year. As with all antibodies care should be taken to avoid repeated freeze thaw cycles. Antibodies should not be exposed to prolonged high temperatures.
Note	For research use only
Application notes	For WB starting dilution is: 1:1000 For IHC-P starting dilution is: 1:50~100
Isotype	Rabbit Ig
Clonality	Polyclonal
MW	56 kDa
Uniprot ID	P86791
NCBI	P86791
Dilution Range	For WB starting dilution is: 1:1000 For IHC-P starting dilution is: 1:50~100
Expiration Date	12 months from date of receipt.



Western blot analysis
in mouse NIH-3T3 c...



C7orf28A Antibody
immunohistochemistry
a...