

Product Datasheet

XRCC1 Antibody (orb1264144)

Description

XRCC1 Antibody

Species/Host

Rabbit

Reactivity

Human

Conjugation

Unconjugated

Tested Applications

FC, IF, IHC-P, WB

Immunogen

This XRCC1 antibody is generated from rabbits immunized with a KLH conjugated synthetic peptide between 407-435 amino acids from the Central region of human XRCC1.

Target

XRCC1

Preservatives

Supplied in PBS with 0.09% (W/V) sodium azide.

Form/Appearance

Liquid

Concentration

batch dependent

Storage

Store at 4°C for three months and -20°C, stable for up to one year. As with all antibodies care should be taken to avoid repeated freeze thaw cycles. Antibodies should not be exposed to prolonged high temperatures.

Note

For research use only

Application notes

For IF starting dilution is: 1:25
For WB starting dilution is: 1:1000
For IHC-P starting dilution is: 1:50~100
For FACS starting dilution is: 1:10~50

Isotype

Rabbit Ig

Clonality

Polyclonal

MW

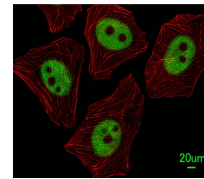
69 kDa

Uniprot ID
[P18887](#)
NCBI
[P18887](#)
Dilution Range

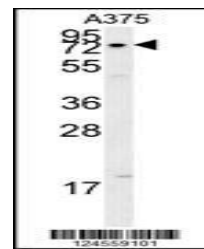
For IF starting dilution is: 1:25
For WB starting dilution is: 1:1000
For IHC-P starting dilution is: 1:50~100
For FACS starting dilution is: 1:10~50

Expiration Date

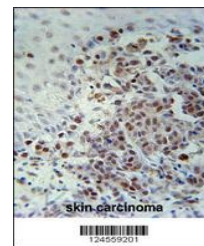
12 months from date of receipt.



Immunofluorescent analysis of A549 cells...



Western blot analysis in A375 cell line ...



XRCC1 Antibody immunohistochemistry anal...