
Product Datasheet

PREPL Antibody (orb1264136)

Description

PREPL Antibody

Species/Host

Rabbit

Reactivity

Hamster, Human, Mouse

Conjugation

Unconjugated

Tested

IHC-P, WB

Applications
Immunogen

This PREPL antibody is generated from rabbits immunized with a KLH conjugated synthetic peptide between 624-652 amino acids from the C-terminal region of human PREPL.

Target

PREPL

Preservatives

Supplied in PBS with 0.09% (W/V) sodium azide.

Form/Appearance

Liquid

Concentration

batch dependent

Storage

Store at 4°C for three months and -20°C, stable for up to one year. As with all antibodies care should be taken to avoid repeated freeze thaw cycles. Antibodies should not be exposed to prolonged high temperatures.

Note

For research use only

Application notes

For WB starting dilution is: 1:1000 For IHC-P starting dilution is: 1:50~100

Isotype

Rabbit Ig

Clonality

Polyclonal

MW

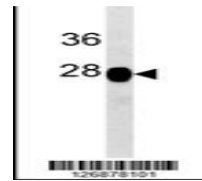
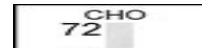
84 kDa

Uniprot ID
[Q4J6C6](#)
NCBI
[Q4J6C6](#)
Dilution Range

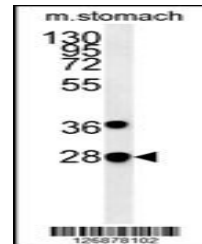
For WB starting dilution is: 1:1000 For IHC-P starting dilution is: 1:50~100

Expiration Date

12 months from date of receipt.



Western blot analysis in CHO cell line I...



Western blot analysis in mouse stomach t...



PREPL Antibody immunohistochemistry anal...