
Product Datasheet

ZDHHC2 Antibody (orb1264131)

Description

ZDHHC2 Antibody

Species/Host

Rabbit

Reactivity

Human, Mouse

Conjugation

Unconjugated

Tested Applications

FC, IHC-P, WB

Immunogen

This ZDHHC2 antibody is generated from rabbits immunized with a KLH conjugated synthetic peptide between 77-106 amino acids from the N-terminal region of human ZDHHC2.

Target

ZDHHC2

Preservatives

Supplied in PBS with 0.09% (W/V) sodium azide.

Form/Appearance

Liquid

Concentration

batch dependent

Storage

Store at 4°C for three months and -20°C, stable for up to one year. As with all antibodies care should be taken to avoid repeated freeze thaw cycles. Antibodies should not be exposed to prolonged high temperatures.

Note

For research use only

Application notes

For WB starting dilution is: 1:1000 For IHC-P starting dilution is: 1:50~100 For FACS starting dilution is: 1:10~50

Isotype

Rabbit Ig

Clonality

Polyclonal

MW

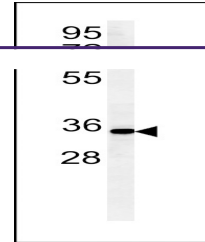
42 kDa

Uniprot ID
[Q9UIJ5](#)
NCBI
[Q9UIJ5](#)
Dilution Range

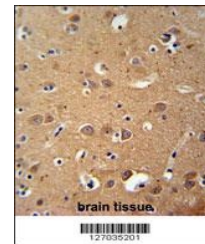
For WB starting dilution is: 1:1000 For IHC-P starting dilution is: 1:50~100 For FACS starting dilution is: 1:10~50

Expiration Date

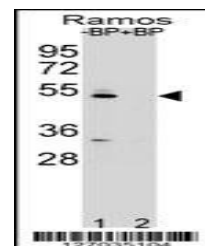
12 months from date of receipt.



Western blot analysis in mouse Neuro-2a ...



ZDHHC2 Antibody immunohistochemistry anal...



Western blot analysis of ZDHHC2 Antibody ...