
Product Datasheet

REG3G Antibody (orb1264128)

Description

REG3G Antibody

Species/Host

Rabbit

Reactivity

Human

Conjugation

Unconjugated

Tested

FC, IHC-P, WB

Applications
Immunogen

This REG3G antibody is generated from rabbits immunized with a KLH conjugated synthetic peptide between 89-116 amino acids from the Central region of human REG3G.

Target

REG3G

Preservatives

Supplied in PBS with 0.09% (W/V) sodium azide.

Form/Appearance

Liquid

Concentration

batch dependent

Storage

Store at 4°C for three months and -20°C, stable for up to one year. As with all antibodies care should be taken to avoid repeated freeze thaw cycles. Antibodies should not be exposed to prolonged high temperatures.

Note

For research use only

Application notes

For IHC-P starting dilution is: 1:25 For WB starting dilution is: 1:400

Isotype

Rabbit Ig

Clonality

Polyclonal

MW

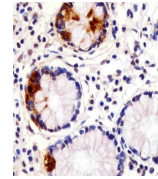
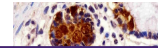
19 kDa

Uniprot ID
[Q6UW15](#)
NCBI
[Q6UW15](#)
Dilution Range

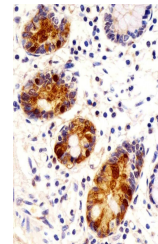
For IHC-P starting dilution is: 1:25 For WB starting dilution is: 1:400

Expiration Date

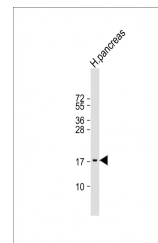
12 months from date of receipt.



Antibody staining REG3G in human small i...



Antibody staining REG3G in human small i...



Western Blot at 1:2000 dilution + human ...