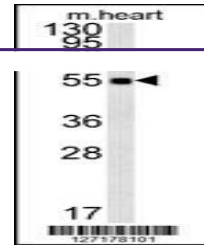


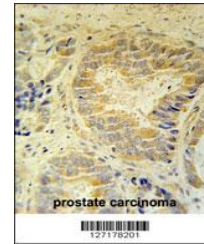
Product Datasheet

OTULIN Antibody (orb1264089)

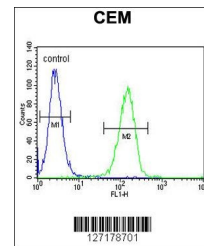
Description	OTULIN Antibody
Species/Host	Rabbit
Reactivity	Human, Mouse
Conjugation	Unconjugated
Tested Applications	FC, IHC-P, WB
Immunogen	This FAM105B antibody is generated from rabbits immunized with a KLH conjugated synthetic peptide between 99-128 amino acids from the Central region of human FAM105B.
Target	OTULIN
Preservatives	Supplied in PBS with 0.09% (W/V) sodium azide.
Form/Appearance	Liquid
Concentration	batch dependent
Storage	Store at 4°C for three months and -20°C, stable for up to one year. As with all antibodies care should be taken to avoid repeated freeze thaw cycles. Antibodies should not be exposed to prolonged high temperatures.
Note	For research use only
Application notes	For WB starting dilution is: 1:1000For IHC-P starting dilution is: 1:50~100For FACS starting dilution is: 1:10~50
Isotype	Rabbit Ig
Clonality	Polyclonal
MW	40 kDa
Uniprot ID	Q96BN8
NCBI	Q96BN8
Dilution Range	For WB starting dilution is: 1:1000For IHC-P starting dilution is: 1:50~100For FACS starting dilution is: 1:10~50
Expiration Date	12 months from date of receipt.



Western blot analysis in mouse heart tis...



FAM105B Antibody immunohistochemistry an...



Flow cytometric analysis of CEM cells (r...