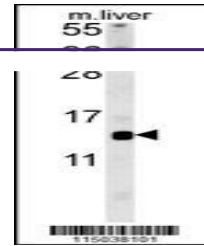
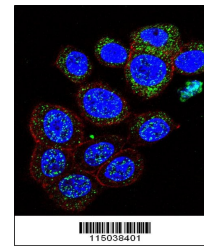

Product Datasheet

GAL Antibody (orb1264085)

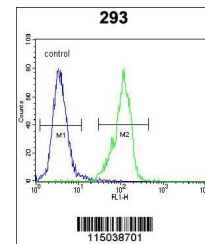
Description	GAL Antibody
Species/Host	Rabbit
Reactivity	Human, Mouse
Conjugation	Unconjugated
Tested Applications	FC, IF, WB
Immunogen	This GAL antibody is generated from rabbits immunized with a KLH conjugated synthetic peptide between 73-101 amino acids from the C-terminal region of human GAL.
Target	GAL
Preservatives	Supplied in PBS with 0.09% (W/V) sodium azide.
Form/Appearance	Liquid
Concentration	batch dependent
Storage	Store at 4°C for three months and -20°C, stable for up to one year. As with all antibodies care should be taken to avoid repeated freeze thaw cycles. Antibodies should not be exposed to prolonged high temperatures.
Note	For research use only
Application notes	For WB starting dilution is: 1:1000For IF starting dilution is: 1:10~50For FACS starting dilution is: 1:10~50
Isotype	Rabbit Ig
Clonality	Polyclonal
MW	13 kDa
Uniprot ID	P22466
NCBI	P22466
Dilution Range	For WB starting dilution is: 1:1000For IF starting dilution is: 1:10~50For FACS starting dilution is: 1:10~50
Expiration Date	12 months from date of receipt.



Western blot analysis in mouse liver tis...



Confocal immunofluorescent analysis of G...



Flow cytometric analysis of 293 cells (r...