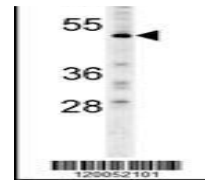
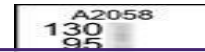
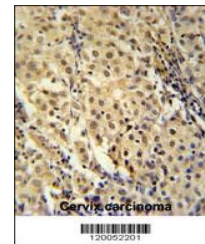

Product Datasheet

FOXC2 Antibody (orb1264083)

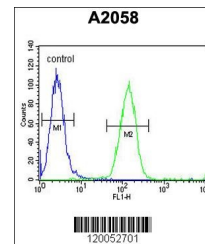
Description	FOXC2 Antibody
Species/Host	Rabbit
Reactivity	Human
Conjugation	Unconjugated
Tested Applications	FC, IHC-P, WB
Immunogen	This FOXC2 antibody is generated from rabbits immunized with a KLH conjugated synthetic peptide between 159-186 amino acids from the Central region of human FOXC2.
Target	FOXC2
Preservatives	Supplied in PBS with 0.09% (W/V) sodium azide.
Form/Appearance	Liquid
Concentration	batch dependent
Storage	Store at 4°C for three months and -20°C, stable for up to one year. As with all antibodies care should be taken to avoid repeated freeze thaw cycles. Antibodies should not be exposed to prolonged high temperatures.
Note	For research use only
Application notes	For WB starting dilution is: 1:1000For IHC-P starting dilution is: 1:50~100For FACS starting dilution is: 1:10~50
Isotype	Rabbit Ig
Clonality	Polyclonal
MW	54 kDa
Uniprot ID	Q99958
NCBI	Q99958
Dilution Range	For WB starting dilution is: 1:1000For IHC-P starting dilution is: 1:50~100For FACS starting dilution is: 1:10~50
Expiration Date	12 months from date of receipt.



Western blot analysis in A2058 cell line...



immunohistochemistry analysis in formali...



Flow cytometric analysis of A2058 cells

...