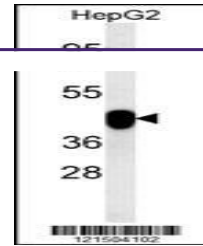
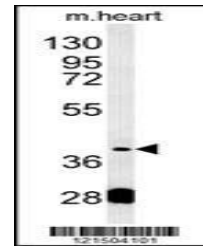

Product Datasheet

PON2 Antibody (orb1264077)

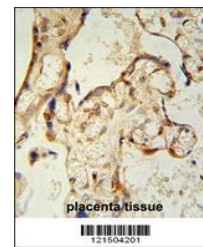
Description	PON2 Antibody
Species/Host	Rabbit
Reactivity	Human, Mouse
Conjugation	Unconjugated
Tested Applications	IF, IHC-P, WB
Immunogen	This PON2 antibody is generated from rabbits immunized with a KLH conjugated synthetic peptide between 74-101 amino acids from the Central region of human PON2.
Target	PON2
Preservatives	Supplied in PBS with 0.09% (W/V) sodium azide.
Form/Appearance	Liquid
Concentration	batch dependent
Storage	Store at 4°C for three months and -20°C, stable for up to one year. As with all antibodies care should be taken to avoid repeated freeze thaw cycles. Antibodies should not be exposed to prolonged high temperatures.
Note	For research use only
Application notes	For WB starting dilution is: 1:1000For IHC-P starting dilution is: 1:50~100For IF starting dilution is: 1:10~50
Isotype	Rabbit Ig
Clonality	Polyclonal
MW	39 kDa
Uniprot ID	Q15165
NCBI	Q15165
Dilution Range	For WB starting dilution is: 1:1000For IHC-P starting dilution is: 1:50~100For IF starting dilution is: 1:10~50
Expiration Date	12 months from date of receipt.



Western blot analysis in HepG2 cell line...



Western blot analysis in mouse heart tis...



PON2 antibody immunohistochemistry analy...