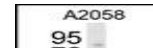
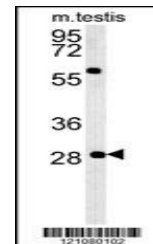

Product Datasheet

GSTO2 Antibody (orb1264051)

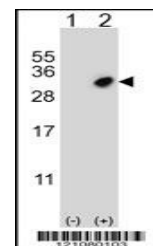
Description	GSTO2 Antibody
Species/Host	Rabbit
Reactivity	Human, Mouse
Conjugation	Unconjugated
Tested Applications	FC, IF, WB
Immunogen	This GSTO2 antibody is generated from rabbits immunized with a KLH conjugated synthetic peptide between 82-110 amino acids from the Central region of human GSTO2.
Target	GSTO2
Preservatives	Supplied in PBS with 0.09% (W/V) sodium azide.
Form/Appearance	Liquid
Concentration	batch dependent
Storage	Store at 4°C for three months and -20°C, stable for up to one year. As with all antibodies care should be taken to avoid repeated freeze thaw cycles. Antibodies should not be exposed to prolonged high temperatures.
Note	For research use only
Application notes	For WB starting dilution is: 1:1000For FACS starting dilution is: 1:10~50For IF starting dilution is: 1:10~50
Isotype	Rabbit Ig
Clonality	Polyclonal
MW	28 kDa
Uniprot ID	Q9H4Y5
NCBI	Q9H4Y5
Dilution Range	For WB starting dilution is: 1:1000For FACS starting dilution is: 1:10~50For IF starting dilution is: 1:10~50
Expiration Date	12 months from date of receipt.



Western blot analysis in A2058 cell line...



Western blot analysis in mouse testis ti...



Western blot analysis of GSTO2 using rab...