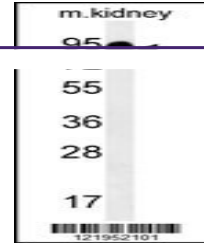
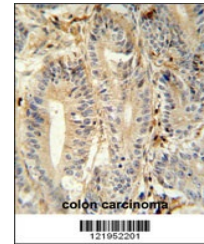

Product Datasheet

MEP1A Antibody (orb1264041)

Description	MEP1A Antibody
Species/Host	Rabbit
Reactivity	Human, Mouse
Conjugation	Unconjugated
Tested Applications	IHC-P, WB
Immunogen	This MEP1A antibody is generated from rabbits immunized with a KLH conjugated synthetic peptide between 149-175 amino acids from the N-terminal region of human MEP1A.
Target	MEP1A
Preservatives	Supplied in PBS with 0.09% (W/V) sodium azide.
Form/Appearance	Liquid
Concentration	batch dependent
Storage	Store at 4°C for three months and -20°C, stable for up to one year. As with all antibodies care should be taken to avoid repeated freeze thaw cycles. Antibodies should not be exposed to prolonged high temperatures.
Note	For research use only
Application notes	For WB starting dilution is: 1:1000For IHC-P starting dilution is: 1:50~100
Isotype	Rabbit Ig
Clonality	Polyclonal
MW	84 kDa
Uniprot ID	Q16819
NCBI	Q16819
Dilution Range	For WB starting dilution is: 1:1000For IHC-P starting dilution is: 1:50~100
Expiration Date	12 months from date of receipt.



Western blot analysis in mouse kidney ti...



MEP1A antibody immunohistochemistry anal...