
Product Datasheet

MMP14 Antibody (orb1263948)

Description

MMP14 Antibody

Species/Host

Rabbit

Reactivity

Human, Mouse

Conjugation

Unconjugated

Tested Applications

FC, IHC-P, WB

Immunogen

This MMP14 antibody is generated from rabbits immunized with a KLH conjugated synthetic peptide between 145-174 amino acids from the N-terminal region of human MMP14.

Target

MMP14

Preservatives

Supplied in PBS with 0.09% (W/V) sodium azide.

Form/Appearance

Liquid

Concentration

batch dependent

Storage

Store at 4°C for three months and -20°C, stable for up to one year. As with all antibodies care should be taken to avoid repeated freeze thaw cycles. Antibodies should not be exposed to prolonged high temperatures.

Note

For research use only

Application notes

For IHC-P starting dilution is: 1:25 For WB starting dilution is: 1:1000 For FACS starting dilution is: 1:10~50

Isotype

Rabbit Ig

Clonality

Polyclonal

MW

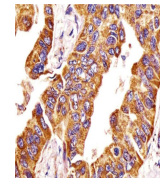
66 kDa

Uniprot ID
[P50281](#)
NCBI
[P50281](#)
Dilution Range

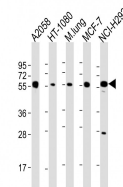
For IHC-P starting dilution is: 1:25 For WB starting dilution is: 1:1000 For FACS starting dilution is: 1:10~50

Expiration Date

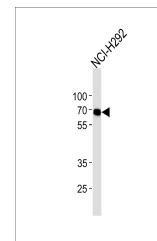
12 months from date of receipt.



Antibody staining MMP14 in human lung ad...



Western Blot at 1:2000 dilution Lane 1: ...



Western blot analysis in NCI-H292 cell l...