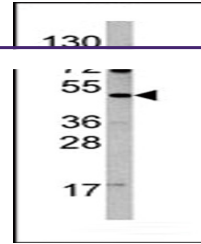
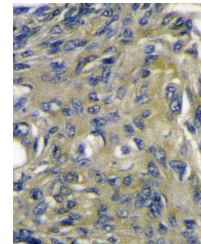

Product Datasheet

FIGF Antibody (orb1263893)

| | |
|----------------------------|--|
| Description | FIGF Antibody |
| Species/Host | Rabbit |
| Reactivity | Human |
| Conjugation | Unconjugated |
| Tested Applications | IHC-P, WB |
| Immunogen | This VEGFD (VEGF4) antibody is generated from rabbits immunized with a KLH conjugated synthetic peptide between 322-352 amino acids from the C-terminal region of human VEGFD (VEGF4). |
| Target | FIGF |
| Preservatives | Supplied in PBS with 0.09% (W/V) sodium azide. |
| Form/Appearance | Liquid |
| Concentration | batch dependent |
| Storage | Store at 4°C for three months and -20°C, stable for up to one year. As with all antibodies care should be taken to avoid repeated freeze thaw cycles. Antibodies should not be exposed to prolonged high temperatures. |
| Note | For research use only |
| Application notes | For WB starting dilution is: 1:1000 For IHC-P starting dilution is: 1:10~50 |
| Isotype | Rabbit Ig |
| Clonality | Polyclonal |
| MW | 40 kDa |
| Uniprot ID | O43915 |
| NCBI | O43915 |
| Dilution Range | For WB starting dilution is: 1:1000 For IHC-P starting dilution is: 1:10~50 |
| Expiration Date | 12 months from date of receipt. |



Western blot analysis of anti-VEGF4 Anti...



VEGFD (VEGF4) Antibody immunohistochemis...