
Product Datasheet

GPC3 Antibody (orb1263865)

Description

GPC3 Antibody

Species/Host

Rabbit

Reactivity

Human, Mouse

Conjugation

Unconjugated

Tested

IF, WB

Applications
Immunogen

This Glypican 3 (GPC3) antibody is generated from rabbits immunized with a KLH conjugated synthetic peptide between 529-560 amino acids from the C-terminal region of human Glypican 3 (GPC3).

Target

GPC3

Preservatives

Supplied in PBS with 0.09% (W/V) sodium azide.

Form/Appearance

Liquid

Concentration

batch dependent

Storage

Store at 4°C for three months and -20°C, stable for up to one year. As with all antibodies care should be taken to avoid repeated freeze thaw cycles. Antibodies should not be exposed to prolonged high temperatures.

Note

For research use only

Application notes

For IF starting dilution is: 1:10~50 For WB starting dilution is: 1:1000

Isotype

Rabbit Ig

Clonality

Polyclonal

MW

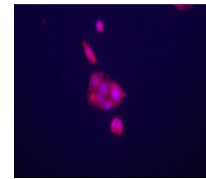
66 kDa

Uniprot ID
[P51654](#)
NCBI
[P51654](#)
Dilution Range

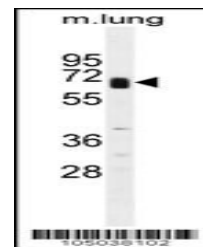
For IF starting dilution is: 1:10~50 For WB starting dilution is: 1:1000

Expiration Date

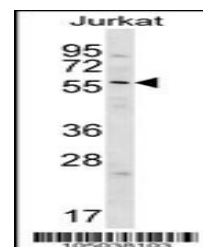
12 months from date of receipt.



Immunofluorescence staining of anti-GPC3 ...



Western blot analysis in mouse lung tiss...



Western blot analysis in Jurkat cell lin...