

Product Datasheet

MYO1C Antibody (orb1263854)

Description

MYO1C Antibody

Species/Host

Rabbit

Reactivity

Human

Conjugation

Unconjugated

Tested Applications

IHC-P, WB

Immunogen

This Myosin 1C (MYO1C) antibody is generated from rabbits immunized with a KLH conjugated synthetic peptide between 911-940 amino acids from the C-terminal region of human Myosin 1C (MYO1C).

Target

MYO1C

Preservatives

Supplied in PBS with 0.09% (W/V) sodium azide.

Form/Appearance

Liquid

Concentration

batch dependent

Storage

Store at 4°C for three months and -20°C, stable for up to one year. As with all antibodies care should be taken to avoid repeated freeze thaw cycles. Antibodies should not be exposed to prolonged high temperatures.

Note

For research use only

Application notes

For WB starting dilution is: 1:1000 For IHC-P starting dilution is: 1:10~50

Isotype

Rabbit Ig

Clonality

Polyclonal

MW

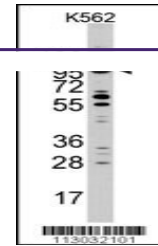
122 kDa

Uniprot ID
[O00159](#)
NCBI
[O00159](#)
Dilution Range

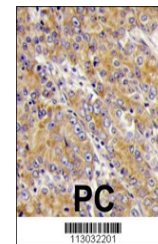
For WB starting dilution is: 1:1000 For IHC-P starting dilution is: 1:10~50

Expiration Date

12 months from date of receipt.



Western blot analysis of MYO1C Antibody ...



Formalin-fixed and paraffin-embedded hum...