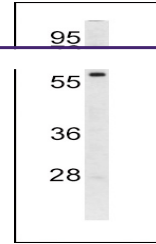
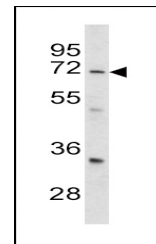

Product Datasheet

LRRC32 Antibody (orb1263743)

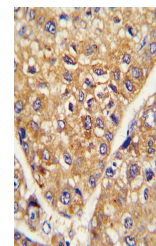
Description	LRRC32 Antibody
Species/Host	Rabbit
Reactivity	Human, Mouse
Conjugation	Unconjugated
Tested Applications	IHC-P, WB
Immunogen	This GARP antibody is generated from rabbits immunized with a KLH conjugated synthetic peptide between 234-260 amino acids from the Central region of human GARP.
Target	LRRC32
Preservatives	Supplied in PBS with 0.09% (W/V) sodium azide.
Form/Appearance	Liquid
Concentration	batch dependent
Storage	Store at 4°C for three months and -20°C, stable for up to one year. As with all antibodies care should be taken to avoid repeated freeze thaw cycles. Antibodies should not be exposed to prolonged high temperatures.
Note	For research use only
Application notes	For WB starting dilution is: 1:1000 For IHC-P starting dilution is: 1:10~50
Isotype	Rabbit Ig
Clonality	Polyclonal
MW	72 kDa
Uniprot ID	Q14392
NCBI	Q14392
Dilution Range	For WB starting dilution is: 1:1000 For IHC-P starting dilution is: 1:10~50
Expiration Date	12 months from date of receipt.



Western blot analysis of GARP antibody i...



Western blot analysis of GARP antibody i...



Formalin-fixed and paraffin-embedded hum...