

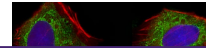
---

## Product Datasheet

### PDIA6 Antibody (orb1263736)

**Description**

PDIA6 Antibody



**Species/Host**

Rabbit

**Reactivity**

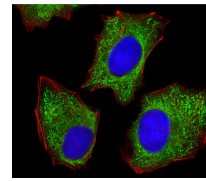
Human, Mouse, Rat

**Conjugation**

Unconjugated

**Tested Applications**

FC, IF, IHC-P, WB



Fluorescent image of HepG2 cells stained...

**Immunogen**

This PDIA6 antibody is generated from rabbits immunized with a KLH conjugated synthetic peptide between 144-172 amino acids from the Central region of human PDIA6.

**Target**

PDIA6

**Preservatives**

Supplied in PBS with 0.09% (W/V) sodium azide.

**Form/Appearance**

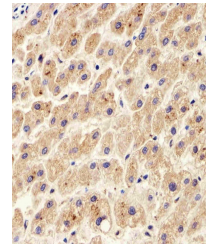
Liquid

**Concentration**

batch dependent

**Storage**

Store at 4°C for three months and -20°C, stable for up to one year. As with all antibodies care should be taken to avoid repeated freeze thaw cycles. Antibodies should not be exposed to prolonged high temperatures.



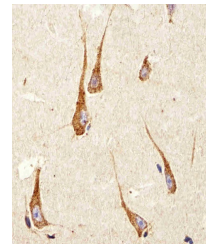
Immunohistochemical analysis of paraffin...

**Note**

For research use only

**Application notes**

For IF starting dilution is: 1:100For IHC-P starting dilution is: 1:100For WB starting dilution is: 1:1000



Immunohistochemical analysis of paraffin...

**Isotype**

Rabbit Ig

**Clonality**

Polyclonal

**MW**

48 kDa

**Uniprot ID**

[Q15084](#)

**NCBI**

[Q15084](#)

**Dilution Range**

For IF starting dilution is: 1:100For IHC-P starting dilution is: 1:100For WB starting dilution is: 1:1000

**Expiration Date**

12 months from date of receipt.